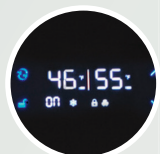


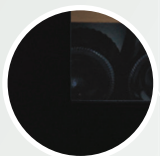
# Wine CELL'R<sup>MC</sup> PLATINUM



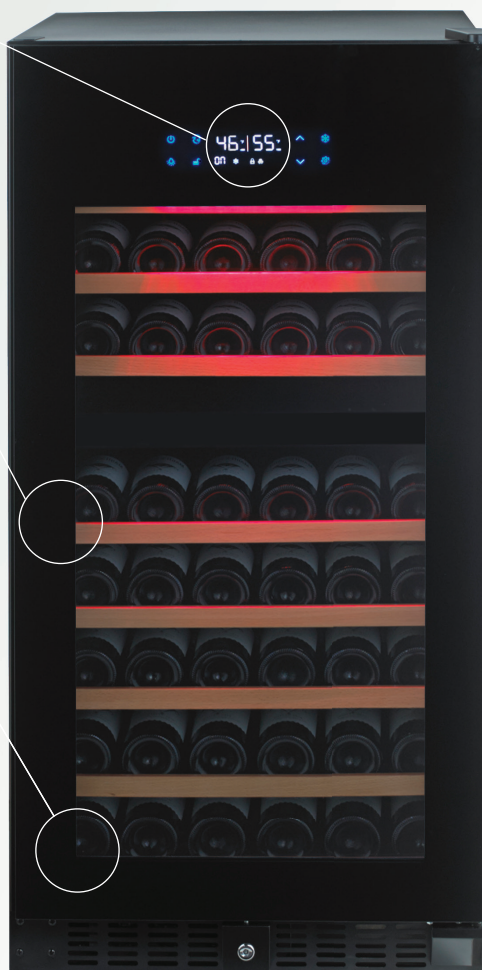
ELECTRONIC  
CONTROL ON  
THE DOOR



HIDDEN HANDLE



FULL GLASS  
TINTED DOOR



## MODEL WC-94 FGB2

### TECHNICAL FEATURES

CAPACITY	89 BOTTLES*
DIMENSIONS	W 23 1/2" X H 47 1/2" X D 27 1/3" W 595 mm X H 1215 mm X D 695 mm
WEIGHT	187 lbs / 85 kg
TEMPERATURES	UP 5-12 DEGREES - DOWN 8-19 DEGREES

### SPECIFIC FEATURES

CABINET COLOR	BLACK
DOOR	FULL GLASS DOOR
CONTROL	ELECTRONIC
TEMPERATURE ZONE	2 ZONES
CHARCOAL FILTER	YES
OPENING	89%
SHELVES	8
LIGHTING	BLUE LED & RED LED
BUILT-IN	YES
SECURITY LOCK	YES
REVERSIBLE DOOR	NO LEFT OR RIGHT HINGE
EXTENSIBLE BALL-BEARING SHELVES	YES
VENTILATION GRILL	BLACK
PART & LABOR WARRANTY	2 YEARS
COMPRESSOR WARRANTY	3 YEARS ON PARTS

\*Capacities are approximate and calculated with Bordeaux bottles type.



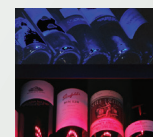
EXTENSIBLE  
SHELVES



ACTIVATED  
CHARCOAL FILTER



AIR CIRCULATION  
FAN



RED AND BLUE  
LIGHT



CAPACITY  
\*750ml



CABINET  
COLOR



SECURITY LOCK



EXTENSIBLE  
SHELVES



LED LIGHTING



BUILT-IN

WINE CELL'R

3208 Autoroute Laval Ouest (A440), Laval (Québec) H7T 2H6 T. 450-688-2320 F. 450-688-2324 [winecellr.ca](http://winecellr.ca)