



WINE CELL'R

Black Pearl



MODEL

WC194FGB5

TECHNICAL FEATURES

CAPACITY	194 bottles*
TEMPERATURE ZONE	1 zone
TEMPERATURE	5-22 degrees
DIMENSIONS	H 72 ¼" X W 25 ⅞" X D 26 ⅞" H 1835mm X W 657mm X D 680mm
BUILT-IN DIMENSIONS	H 73 ⅞" X W 26 ¾" X D 27 ⅞" H 1855mm X W 677mm X D 700mm
WEIGHT	335 lbs / 151 kg

SPECIFIC FEATURES

PROFESSIONAL USE	Yes
BUILT-IN OR FREE STANDING	Yes
CHARCOAL FILTER	Yes
DOOR	Full glass door
REVERSIBLE DOOR	No (right or left hinge)
SECURITY LOCK	Yes
CONTROL	Electronic on door
LIGHTING	LED - blue and red
SHELVES	15
SHELVES OPENING	80%
EXTENSIBLE BALL-BEARING SHELVES	Yes
CABINET COLOR	Black
VENTILATION GRILL	Black
PART & LABOR WARRANTY	2 years
COMPRESSOR WARRANTY	3 years part only (Embraco)

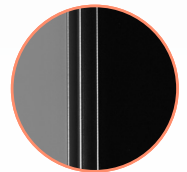
* Capacities are approximate and calculated with bordeaux bottles type.



FULL GLASS DOOR



SECURITY LOCK



INVISIBLE HANDLE

